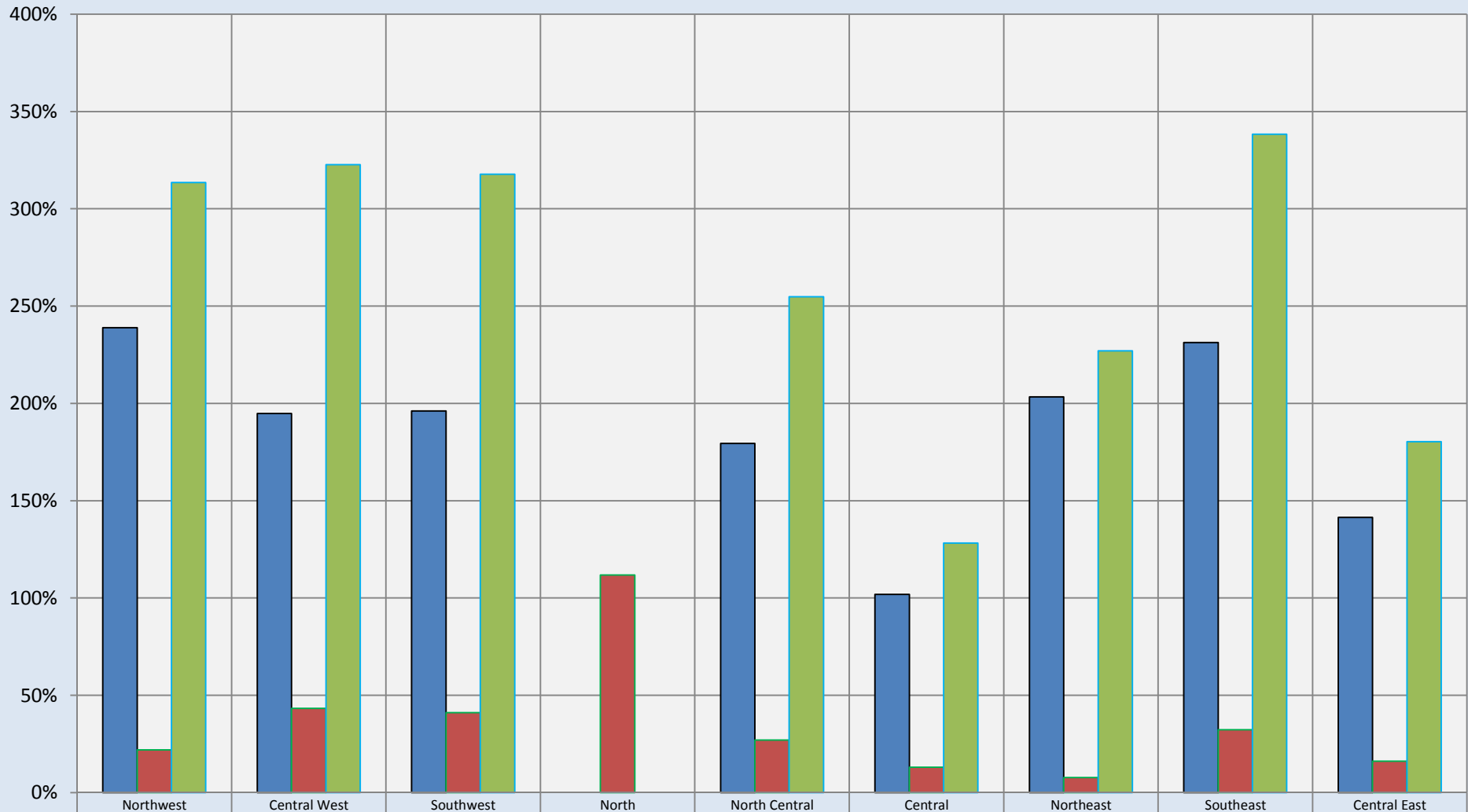


Boulder Neighborhoods Long Term Price Appreciation: Mid-Sized Houses

All Recorded Sales: Data from Tax Records



	Northwest	Central West	Southwest	North	North Central	Central	Northeast	Southeast	Central East
■ 2001/2002 vs 1991/1992	239%	195%	196%	0%	179%	102%	203%	231%	141%
■ 2010/2011 vs 2001/2002	22%	43%	41%	112%	27%	13%	8%	32%	16%
■ 2010/2011 vs 1991/1992	314%	323%	318%	0%	255%	128%	227%	338%	180%

Compiled by Agents for Home Buyers LLC

www.Agents4HomeBuyers.com

Data Source: Metrolist Tax Record Data

Chart based on median price-per sqft of 1600-2300 sqft homes. Basement sqft not included in calculations.