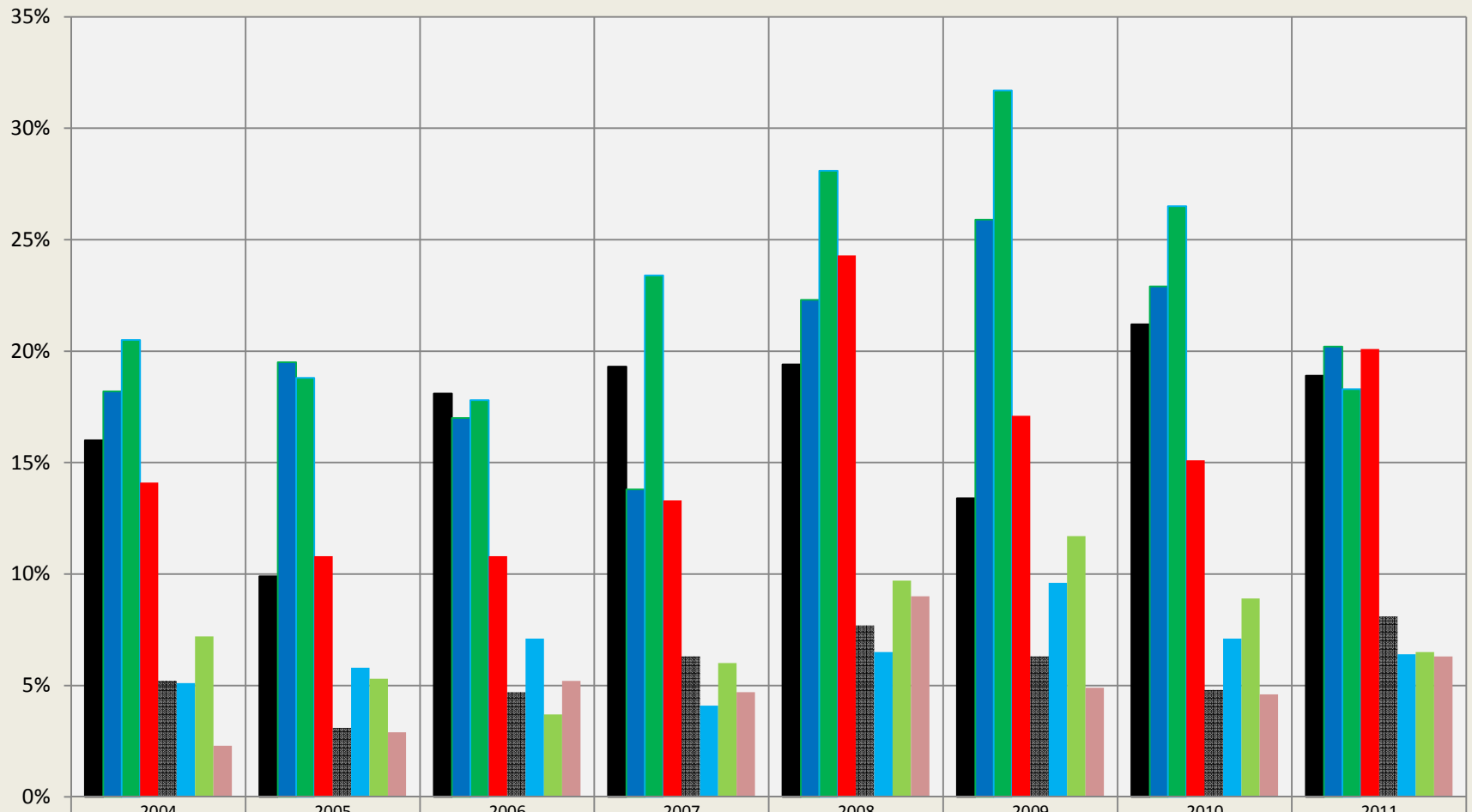


# Arvada: Houses/Condos Under Contract within 14 & 5 Days

Sales through MLS System Only: Excluding New Construction



■ Large Houses 14 Days	2004	2005	2006	2007	2008	2009	2010	2011
■ Large Houses 14 Days	16.0%	9.9%	18.1%	19.3%	19.4%	13.4%	21.2%	18.9%
■ Mid-Sized Houses 14 Days	18.2%	19.5%	17.0%	13.8%	22.3%	25.9%	22.9%	20.2%
■ Small Houses 14 Days	20.5%	18.8%	17.8%	23.4%	28.1%	31.7%	26.5%	18.3%
■ Condo/Townhouse 14 Days	14.1%	10.8%	10.8%	13.3%	24.3%	17.1%	15.1%	20.1%
■ Large Houses 5 Days	5.2%	3.1%	4.7%	6.3%	7.7%	6.3%	4.8%	8.1%
■ Mid-Sized Houses 5 Days	5.1%	5.8%	7.1%	4.1%	6.5%	9.6%	7.1%	6.4%
■ Small Houses 5 Days	7.2%	5.3%	3.7%	6.0%	9.7%	11.7%	8.9%	6.5%
■ Condo/Townhouse 5 Days	2.3%	2.9%	5.2%	4.7%	9.0%	4.9%	4.6%	6.3%

Compiled by Agents for Home Buyers LLC

[www.Agents4HomeBuyers.com](http://www.Agents4HomeBuyers.com)

Data Source: IRES MLS

Time to Contract for 2300-3000, 1600-2300, & 900-1600 sqft Houses and 800-1600 sqft Condos/Townhomes (not including basement).