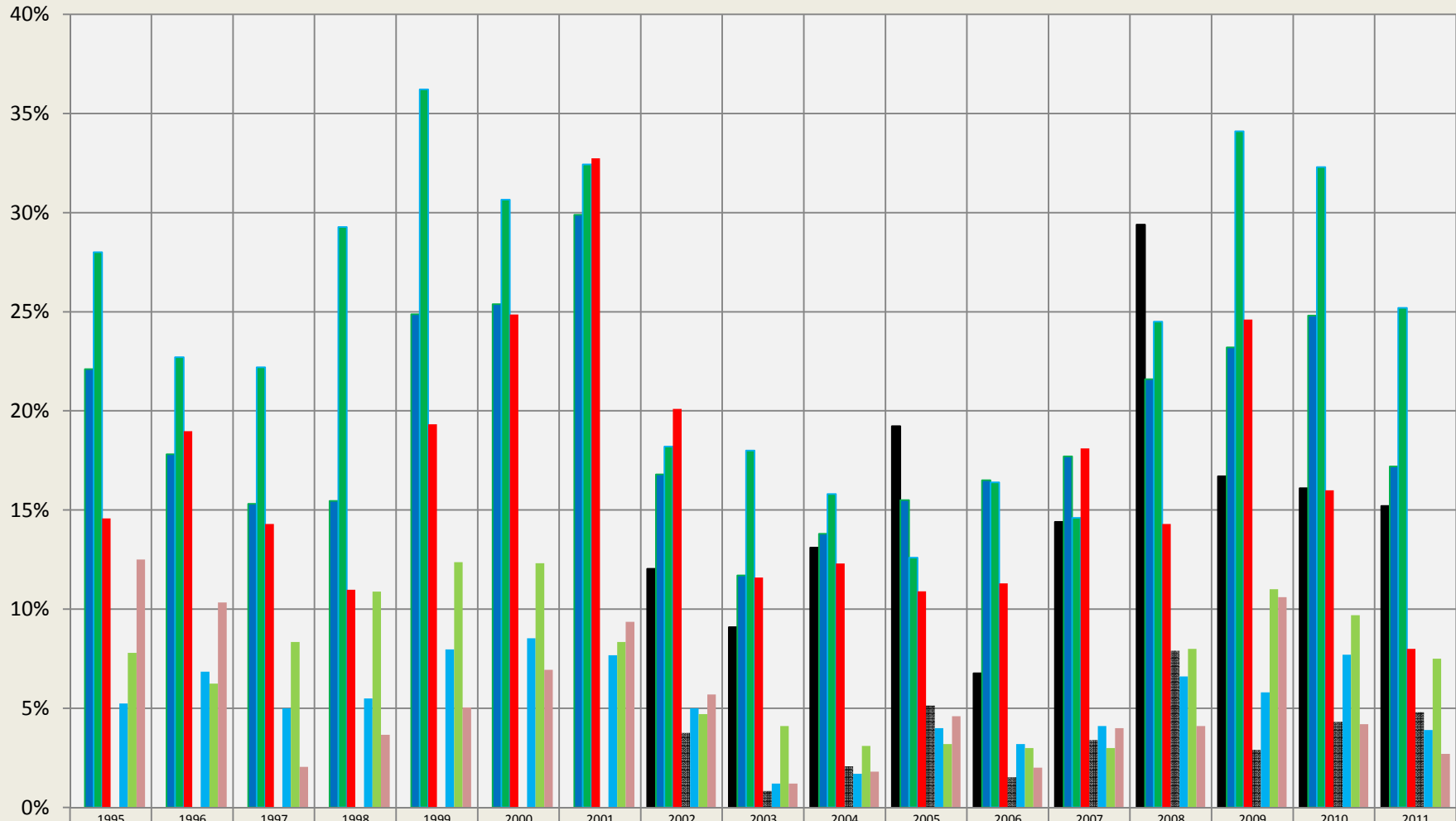


# Longmont: Houses/Condos Under Contract within 14 & 5 Days

Sales through MLS System Only: Excluding New Construction



	1995	1996	1997	1998	1999	2000	2001	2002	2003	2004	2005	2006	2007	2008	2009	2010	2011
Large Houses 14 Days								12.0%	9.1%	13.1%	19.2%	6.8%	14.4%	29.4%	16.7%	16.1%	15.2%
Mid-Sized Houses 14 Days	22.1%	17.8%	15.3%	15.5%	24.9%	25.4%	29.9%	16.8%	11.7%	13.8%	15.5%	16.5%	17.7%	21.6%	23.2%	24.8%	17.2%
Small Houses 14 Days	28.0%	22.7%	22.2%	29.3%	36.2%	30.7%	32.4%	18.2%	18.0%	15.8%	12.6%	16.4%	14.6%	24.5%	34.1%	32.3%	25.2%
Condo/Townhouse 14 Days	14.6%	19.0%	14.3%	11.0%	19.3%	24.9%	32.7%	20.1%	11.6%	12.3%	10.9%	11.3%	18.1%	14.3%	24.6%	16.0%	8.0%
Large Houses 5 Days								3.8%	0.8%	2.1%	5.1%	1.5%	3.4%	7.9%	2.9%	4.3%	4.8%
Mid-Sized Houses 5 Days	5.2%	6.9%	5.0%	5.5%	8.0%	8.5%	7.7%	5.0%	1.2%	1.7%	4.0%	3.2%	4.1%	6.6%	5.8%	7.7%	3.9%
Small Houses 5 Days	7.8%	6.3%	8.4%	10.9%	12.4%	12.3%	8.4%	4.7%	4.1%	3.1%	3.2%	3.0%	3.0%	8.0%	11.0%	9.7%	7.5%
Condo/Townhouse 5 Days	12.5%	10.3%	2.0%	3.7%	5.0%	6.9%	9.4%	5.7%	1.2%	1.8%	4.6%	2.0%	4.0%	4.1%	10.6%	4.2%	2.7%

Compiled by Agents for Home Buyers LLC

[www.Agents4HomeBuyers.com](http://www.Agents4HomeBuyers.com)

Data Source: IRES MLS

Time to Contract for 2300-3000, 1600-2300, & 900-1600 sqft Houses and 800-1600 sqft Condos/Townhomes (not including basement).