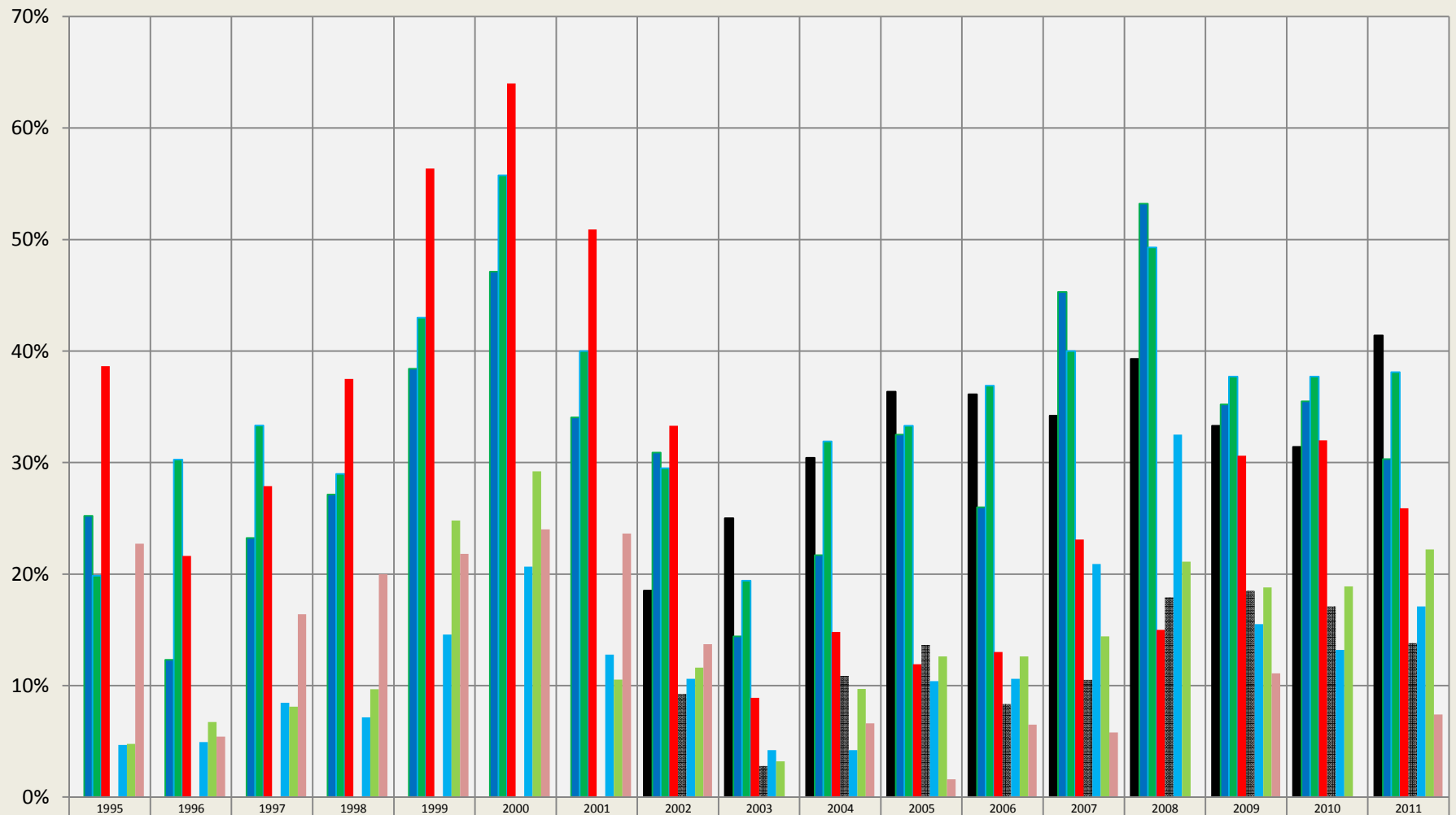


Louisville: Houses/Condos Under Contract within 14 & 5 Days

Sales through MLS System Only: Excluding New Construction



	1995	1996	1997	1998	1999	2000	2001	2002	2003	2004	2005	2006	2007	2008	2009	2010	2011
■ Large Houses 14 Days								18.5%	25.0%	30.4%	36.4%	36.1%	34.2%	39.3%	33.3%	31.4%	41.4%
■ Mid-Sized Houses 14 Days	25.2%	12.3%	23.2%	27.1%	38.4%	47.1%	34.0%	30.9%	14.4%	21.7%	32.5%	26.0%	45.3%	53.2%	35.2%	35.5%	30.3%
■ Small Houses 14 Days	19.8%	30.3%	33.3%	29.0%	43.0%	55.8%	40.0%	29.5%	19.4%	31.9%	33.3%	36.9%	40.0%	49.3%	37.7%	37.7%	38.1%
■ Condo/Townhouse 14 Days	38.6%	21.6%	27.9%	37.5%	56.4%	64.0%	50.9%	33.3%	8.9%	14.8%	11.9%	13.0%	23.1%	15.0%	30.6%	32.0%	25.9%
■ Large Houses 5 Days								9.3%	2.8%	10.9%	13.6%	8.3%	10.5%	17.9%	18.5%	17.1%	13.8%
■ Mid-Sized Houses 5 Days	4.7%	4.9%	8.5%	7.1%	14.6%	20.7%	12.8%	10.6%	4.2%	4.2%	10.4%	10.6%	20.9%	32.5%	15.5%	13.2%	17.1%
■ Small Houses 5 Days	4.8%	6.7%	8.1%	9.7%	24.8%	29.2%	10.5%	11.6%	3.2%	9.7%	12.6%	12.6%	14.4%	21.1%	18.8%	18.9%	22.2%
■ Condo/Townhouse 5 Days	22.7%	5.4%	16.4%	20.0%	21.8%	24.0%	23.6%	13.7%	0.0%	6.6%	1.6%	6.5%	5.8%	0.0%	11.1%	0.0%	7.4%

Compiled by Agents for Home Buyers LLC

www.Agents4HomeBuyers.com

Data Source: IRES MLS

Time to Contract for 2300-3000, 1600-2300, & 900-1600 sqft Houses and 800-1600 sqft Condos/Townhomes (not including basement).