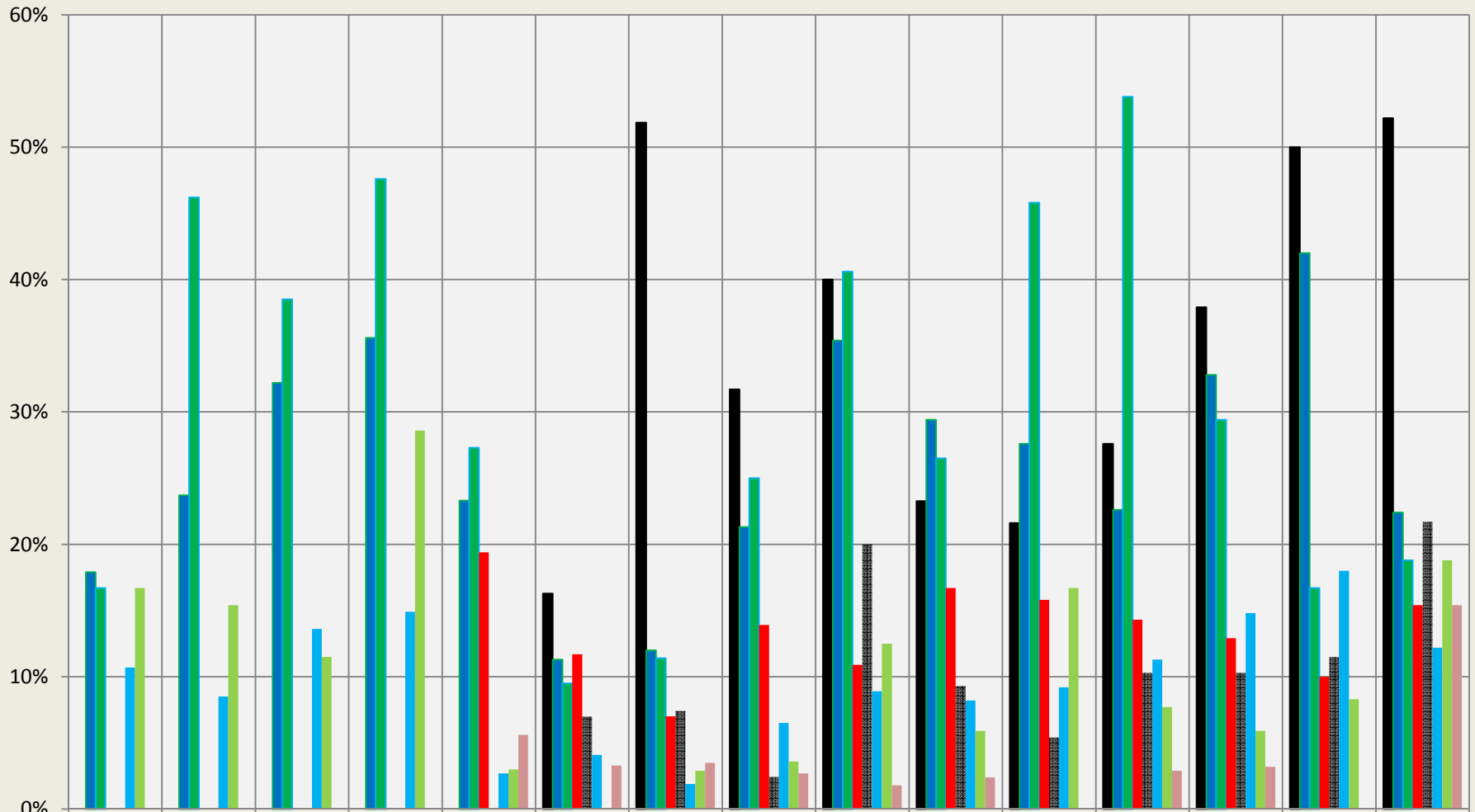


Superior: Houses/Condos Under Contract within 14 & 5 Days

Sales through MLS System Only: Excluding New Construction



| | 1997 | 1998 | 1999 | 2000 | 2001 | 2002 | 2003 | 2004 | 2005 | 2006 | 2007 | 2008 | 2009 | 2010 | 2011 |
|----------------------------|-------|-------|-------|-------|-------|-------|-------|-------|-------|-------|-------|-------|-------|-------|-------|
| ■ Large Houses 14 Days | | | | | | 16.3% | 51.9% | 31.7% | 40.0% | 23.3% | 21.6% | 27.6% | 37.9% | 50.0% | 52.2% |
| ■ Mid-Sized Houses 14 Days | 17.9% | 23.7% | 32.2% | 35.6% | 23.3% | 11.3% | 12.0% | 21.3% | 35.4% | 29.4% | 27.6% | 22.6% | 32.8% | 42.0% | 22.4% |
| ■ Small Houses 14 Days | 16.7% | 46.2% | 38.5% | 47.6% | 27.3% | 9.5% | 11.4% | 25.0% | 40.6% | 26.5% | 45.8% | 53.8% | 29.4% | 16.7% | 18.8% |
| ■ Condo/Townhouse 14 Days | | | | | 19.4% | 11.7% | 7.0% | 13.9% | 10.9% | 16.7% | 15.8% | 14.3% | 12.9% | 10.0% | 15.4% |
| ■ Large Houses 5 Days | | | | | | 7.0% | 7.4% | 2.4% | 20.0% | 9.3% | 5.4% | 10.3% | 10.3% | 11.5% | 21.7% |
| ■ Mid-Sized Houses 5 Days | 10.7% | 8.5% | 13.6% | 14.9% | 2.7% | 4.1% | 1.9% | 6.5% | 8.9% | 8.2% | 9.2% | 11.3% | 14.8% | 18.0% | 12.2% |
| ■ Small Houses 5 Days | 16.7% | 15.4% | 11.5% | 28.6% | 3.0% | 0.0% | 2.9% | 3.6% | 12.5% | 5.9% | 16.7% | 7.7% | 5.9% | 8.3% | 18.8% |
| ■ Condo/Townhouse 5 Days | | | | | 5.6% | 3.3% | 3.5% | 2.7% | 1.8% | 2.4% | 0.0% | 2.9% | 3.2% | 0.0% | 15.4% |

Compiled by Agents for Home Buyers LLC

www.Agents4HomeBuyers.com

Data Source: IRES MLS

Time to Contract for 2300-3000, 1600-2300, & 900-1600 sqft Houses and 800-1600 sqft Condos/Townhomes (not including basement).