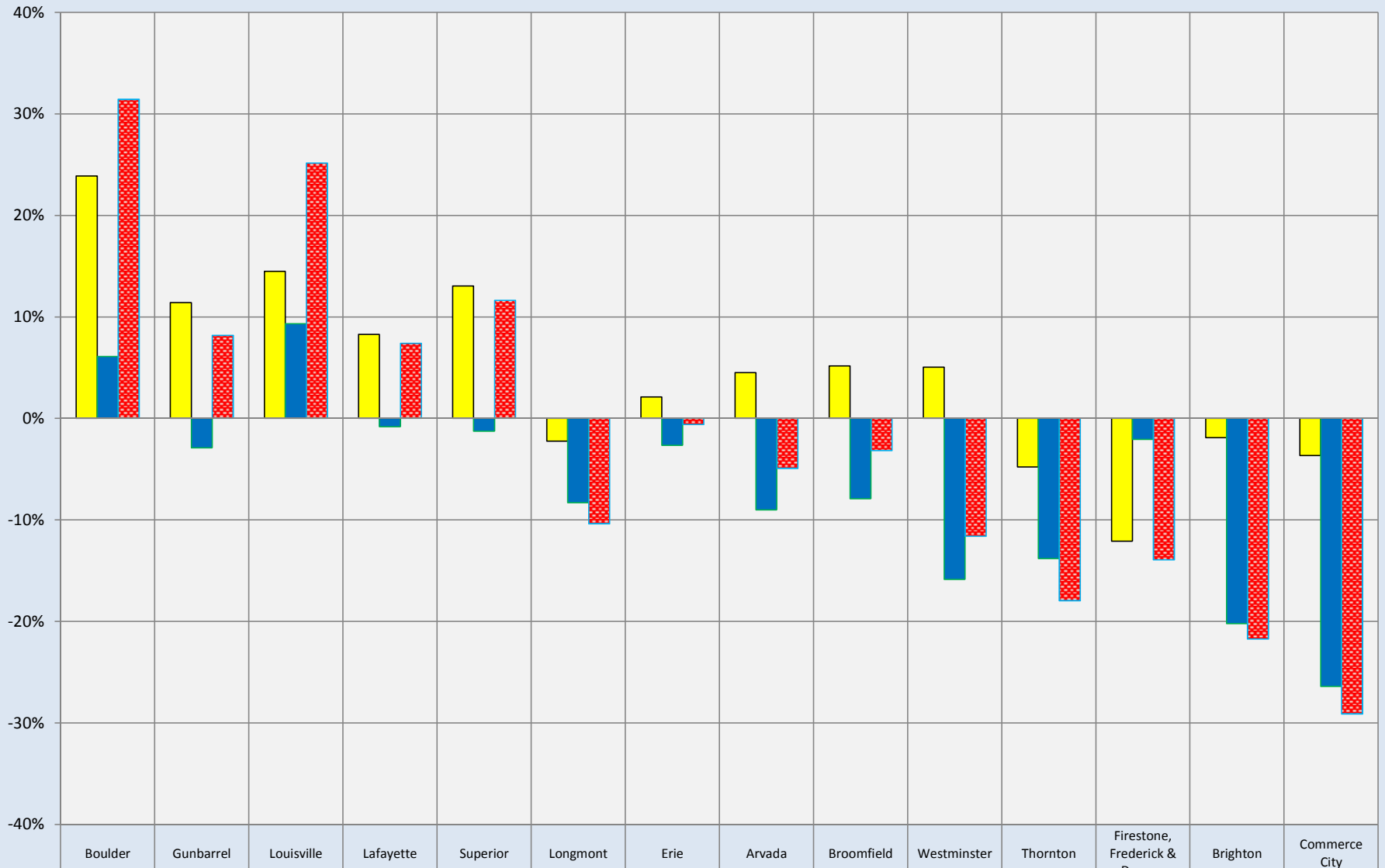


# Price Appreciation/Depreciation Pre & Post Downturn: Small Houses

All Recorded Sales: Data from Tax Records



2006/2007 vs 2001/2002	24%	11%	14%	8%	13%	-2%	2%	5%	5%	5%	-5%	-12%	-2%	-4%
2010/2011 vs 2006/2007	6%	-3%	9%	-1%	-1%	-8%	-3%	-9%	-8%	-16%	-14%	-2%	-20%	-26%
2010/2011 vs 2001/2002	31%	8%	25%	7%	12%	-10%	-1%	-5%	-3%	-12%	-18%	-14%	-22%	-29%

Compiled by Agents for Home Buyers LLC [www.Agents4HomeBuyers.com](http://www.Agents4HomeBuyers.com) Data Source: Metrolist Tax Record Data

Chart based on median price-per sqft of 900-1600 sqft houses. Basement sqft not included in calculations.