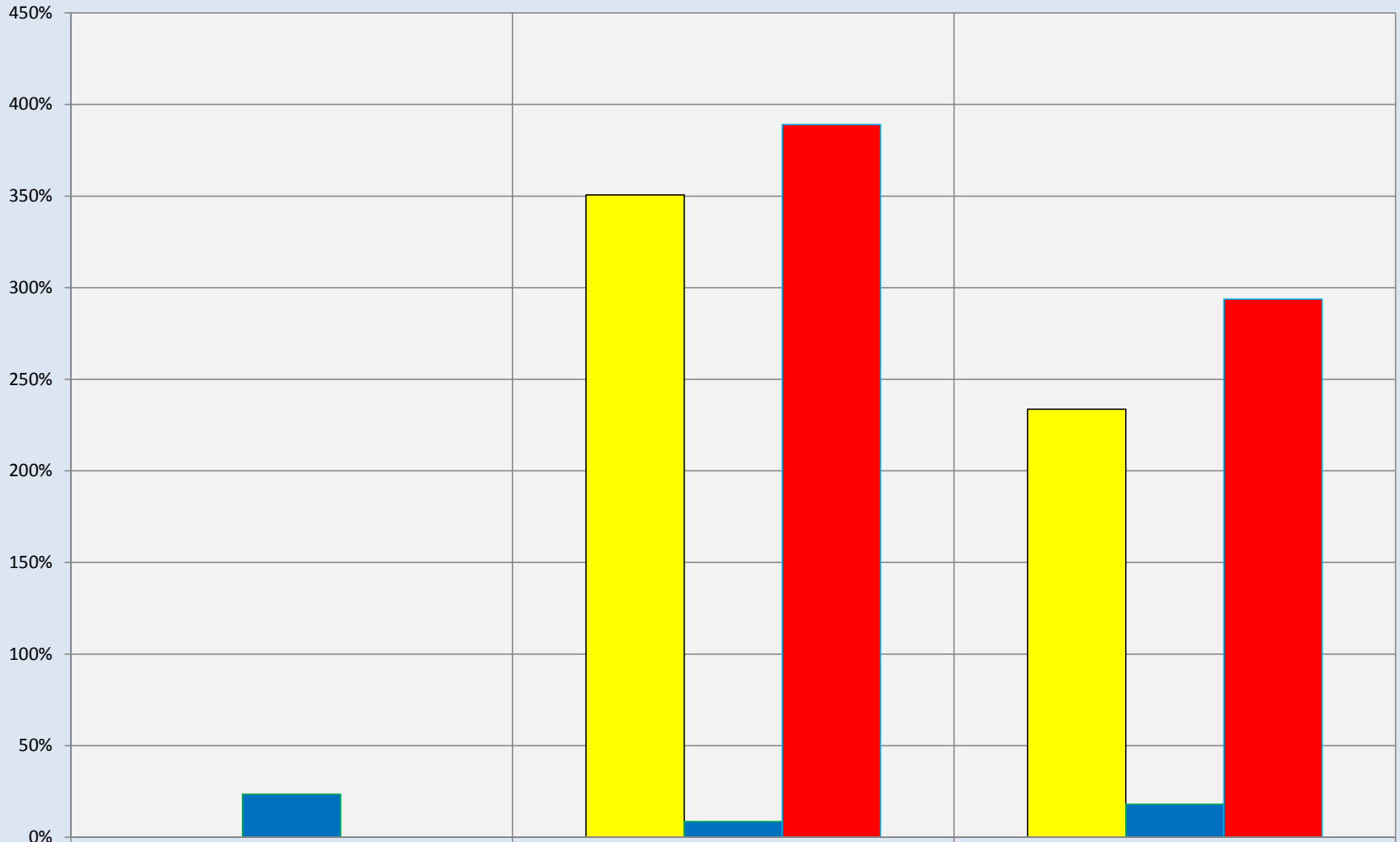


# Nederland: Long Term Appreciation

All Recorded Sales: Data from Tax Records



1991/1992 to 2001/2002	0%	351%	234%
2001/2002 to 2009/2010	24%	9%	18%
1990/1991 to 2009/2010	0%	389%	294%

Compiled by Agents for Home Buyers LLC

[www.Agents4HomeBuyers.com](http://www.Agents4HomeBuyers.com)

Data Source: Metrolist Tax & IRES MLS

Chart based on median price per sqft of homes. Basement sqft not included in calculations.