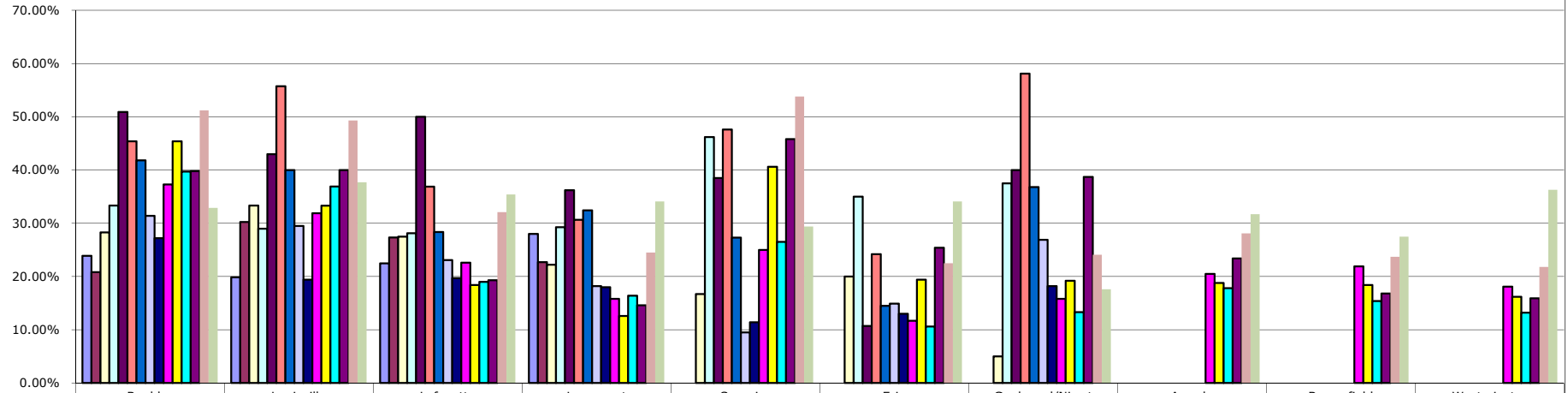


Small Homes Under Contract in 14 Days or Less



	Boulder	Louisville	Lafayette	Longmont	Superior	Erie	Gunbarrel/Niwot	Arvada	Broomfield	Westminster
1995	23.9%	19.8%	22.5%	28.0%						
1996	20.8%	30.3%	27.3%	22.7%						
1997	28.3%	33.3%	27.5%	22.2%	16.7%	20.0%	5.0%			
1998	33.3%	29.0%	28.1%	29.3%	46.2%	35.0%	37.5%			
1999	50.9%	43.0%	50.0%	36.2%	38.5%	10.7%	40.0%			
2000	45.4%	55.8%	36.9%	30.7%	47.6%	24.2%	58.1%			
2001	41.8%	40.0%	28.4%	32.4%	27.3%	14.5%	36.8%			
2002	31.4%	29.5%	23.1%	18.2%	9.5%	14.9%	26.9%			
2003	27.2%	19.4%	19.7%	18.0%	11.4%	13.0%	18.2%			
2004	37.3%	31.9%	22.6%	15.8%	25.0%	11.7%	15.8%	20.5%	21.9%	18.1%
2005	45.4%	33.3%	18.4%	12.6%	40.6%	19.4%	19.2%	18.8%	18.4%	16.2%
2006	39.7%	36.9%	19.0%	16.4%	26.5%	10.6%	13.3%	17.8%	15.4%	13.2%
2007	39.8%	40.0%	19.3%	14.6%	45.8%	25.4%	38.7%	23.4%	16.8%	15.9%
2008	51.2%	49.3%	32.1%	24.5%	53.8%	22.5%	24.1%	28.1%	23.7%	21.8%
2009	32.9%	37.7%	35.4%	34.1%	29.4%	34.1%	17.6%	31.7%	27.5%	36.3%

900-1600 Square Feet
Excluding Basement

AGENTS FOR HOMES BUYERS LLC
(303) 448-8808 team@a4hb.com www.Agents4HomeBuyers.com

Resale Homes Only
New Homes Excluded