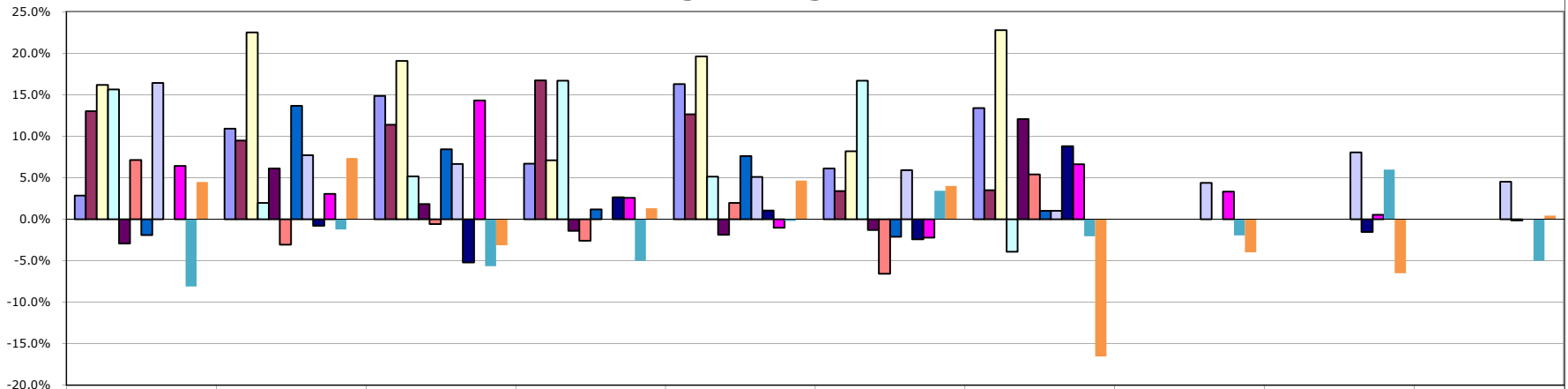


# CHART 5

## Large Homes Annual Percentage Change in Price



	Boulder	Louisville	Lafayette	Longmont	Superior	Erie	Gunbarrel/Niwot	Arvada	Broomfield	Westminster
■ 1997-1998	2.8%	10.9%	14.8%	6.7%	16.3%	6.1%	13.4%			
■ 1998-1999	13.0%	9.5%	11.4%	16.7%	12.6%	3.4%	3.5%			
■ 1999-2000	16.2%	22.5%	19.1%	7.1%	19.6%	8.2%	22.8%			
■ 2000-2001	15.6%	2.0%	5.2%	16.7%	5.1%	16.7%	-3.9%			
■ 2001-2002	-2.9%	6.1%	1.8%	-1.4%	-1.9%	-1.3%	12.0%			
■ 2002-2003	7.1%	-3.1%	-0.6%	-2.6%	1.9%	-6.6%	5.4%			
■ 2003-2004	-1.9%	13.7%	8.4%	1.2%	7.6%	-2.1%	1.0%			
■ 2004-2005	16.4%	7.7%	6.6%	0.0%	5.1%	5.9%	1.0%	4.4%	8.1%	4.5%
■ 2005-2006	0.0%	-0.8%	-5.2%	2.6%	1.1%	-2.4%	8.8%	0.0%	-1.5%	-0.1%
■ 2006-2007	6.4%	3.0%	14.3%	2.6%	-1.0%	-2.2%	6.6%	3.3%	0.5%	0.0%
■ 2007-2008	-8.1%	-1.2%	-5.7%	-5.0%	-0.2%	3.4%	-2.1%	-2.0%	6.0%	-5.0%
■ 2008-2009	4.5%	7.4%	-3.2%	1.3%	4.6%	4.0%	-16.5%	-4.0%	-6.5%	0.4%

2300-3000 Square Feet  
Excluding Basement

**AGENTS FOR HOME BUYERS LLC**  
(303) 448-8808 team@a4hb.com www.Agents4HomeBuyers.com

Resale Homes Only  
New Homes Excluded