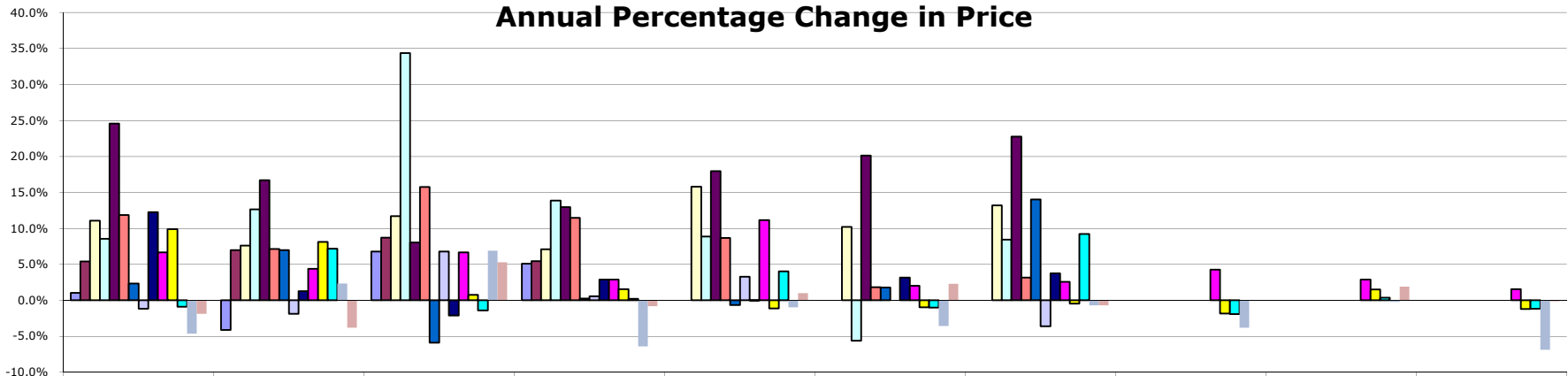


CHART 6

Medium Homes Annual Percentage Change in Price



	Boulder	Louisville	Lafayette	Longmont	Superior	Erie	Gunbarrel/Niwot	Arvada	Broomfield	Westminster
1995-1996	1.1%	-4.1%	6.8%	5.1%						
1996-1997	5.4%	7.0%	8.7%	5.4%						
1997-1998	11.1%	7.6%	11.7%	7.1%	15.8%	10.2%	13.2%			
1998-1999	8.5%	12.6%	34.4%	13.9%	8.9%	-5.6%	8.4%			
1999-2000	24.6%	16.7%	8.0%	13.0%	18.0%	20.1%	22.8%			
2000-2001	11.9%	7.1%	15.7%	11.5%	8.7%	1.8%	3.2%			
2001-2002	2.4%	7.0%	-5.9%	0.3%	-0.7%	1.8%	14.0%			
2002-2003	-1.1%	-1.9%	6.8%	0.6%	3.3%	0.0%	-3.6%			
2003-2004	12.3%	1.3%	-2.1%	2.9%	0.0%	3.2%	3.8%			
2004-2005	6.7%	4.4%	6.7%	2.9%	11.1%	2.0%	2.6%	4.2%	2.9%	1.6%
2005-2006	9.9%	8.1%	0.8%	1.5%	-1.1%	-1.0%	-0.5%	-1.9%	1.5%	-1.2%
2006-2007	-0.9%	7.2%	-1.4%	0.2%	4.0%	-1.0%	9.2%	-1.9%	0.4%	-1.2%
2007-2008	-4.6%	2.4%	6.9%	-6.4%	-1.0%	-3.6%	-0.7%	-3.8%	-0.2%	-6.9%
2008-2009	-1.9%	-3.8%	5.3%	-0.8%	1.0%	2.3%	-0.7%	0.0%	1.9%	-0.1%

1600-2300 Square Feet
Excluding Basement

AGENTS FOR HOME BUYERS LLC
(303) 448-8808 team@a4hb.com www.Agents4HomeBuyers.com

Resale Homes Only
New Homes Excluded