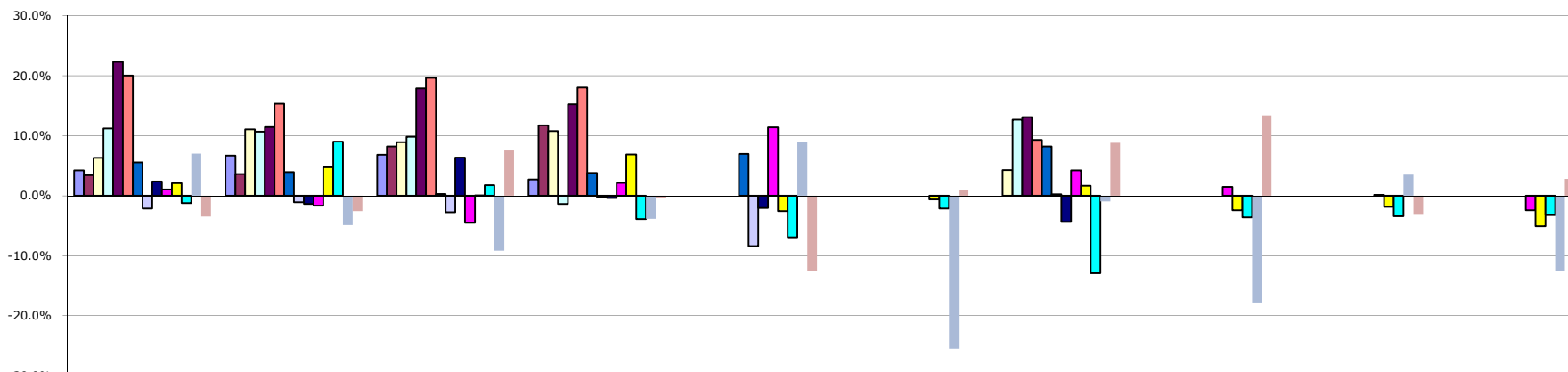


CHART 8

Condos & Townhomes Annual Percentage Change in Price



	Boulder	Louisville	Lafayette	Longmont	Superior	Erie	Gunbarrel/Niwot	Arvada	Broomfield	Westminster
■ 1995-1996	4.3%	6.7%	6.9%	2.7%						
■ 1996-1997	3.4%	3.6%	8.2%	11.7%						
■ 1997-1998	6.3%	11.1%	8.9%	10.8%			4.27%			
■ 1998-1999	11.2%	10.7%	9.8%	-1.4%			12.70%			
■ 1999-2000	22.3%	11.4%	17.9%	15.3%			13.09%			
■ 2000-2001	20.1%	15.3%	19.7%	18.0%			9.32%			
■ 2001-2002	5.6%	3.9%	0.3%	3.8%	7.0%		8.2%			
■ 2002-2003	-2.1%	-1.1%	-2.8%	-0.2%	-8.4%		0.3%			
■ 2003-2004	2.4%	-1.4%	6.4%	-0.4%	-2.0%		-4.3%			
■ 2004-2005	1.1%	-1.6%	-4.5%	2.2%	11.4%		4.2%	1.5%	0.2%	-2.4%
■ 2005-2006	2.1%	4.7%	0.1%	6.9%	-2.6%	-0.6%	1.7%	-2.4%	-1.8%	-5.1%
■ 2006-2007	-1.2%	9.0%	1.7%	-3.9%	-6.9%	-2.1%	-12.9%	-3.6%	-3.4%	-3.2%
■ 2007-2008	7.0%	-4.9%	-9.1%	-3.8%	9.0%	-25.5%	-0.9%	-17.8%	3.5%	-12.5%
■ 2008-2009	-3.5%	-2.6%	7.5%	-0.3%	-12.5%	0.9%	8.9%	13.4%	-3.2%	2.8%

800-1600 Square Feet
Excluding Basement

AGENTS FOR HOME BUYERS LLC
(303) 448-8808 team@a4hb.com www.Agents4HomeBuyers.com

Resale Homes Only
New Homes Excluded